

**AMENDMENT NUMBER 01 TO THE BID DOCUMENTS**

Amendment Date: **February 15, 2022**

**Four Streambank Stabilization Construction Projects  
NatureWorksPark, Cross Keys Village, Maple Hollow Townhouses, and Yohn Property  
Blair County, Pennsylvania**

Reminder, this is a request for qualified contractors to provide a full project bid on construction all four (4) of the listed streambank stabilization projects in the summer of 2022. Bids will be determined by total sum of all four (4) projects. Individual estimated costs for each project site are needed due to funding sources.

**A. This Amendment shall be considered part of the bid documents for the above-mentioned projects as though it had been issued at the same time and shall be incorporated integrally therewith. Where provisions of the following supplementary data differ from those of the original bid documents, this Amendment shall govern and take precedence. BIDDERS MUST SIGN THE AMENDMENT AND SUBMIT IT WITH THEIR BIDS.**

**B. Bidders are hereby notified that they shall make any necessary adjustments in their estimates as a result of this Amendment. It will be construed that each bidder's proposal is submitted with full knowledge of all modifications and supplemental data specified herein.**

Except as described below, the original bid document remains unchanged. The bid documents are modified and/or clarified, as follows:

- I. A minimum of one (1) Laborer is requested for all four (4) project sites to assist with drilling and pinning of structures.
- II. Hemlock must be used for all log structures.
- III. Yohn Property Project
  - a. Item 4 on Attachment A: Yohn Property Bid Schedule will need five (5) tons of stone. Yohn Property Project Material List has been modified to reflect materials needed for Device # 6-8 (Saw-Tooth Deflector). See amended attachment labeled Item 3a.
- IV. Maple Hollow Townhouse Project
  - a. Access Road Map has been modified to reflect an additional access road for the upstream portion of the project. See amended attachment labeled Item 4a.
- V. Cross Keys Village Project
  - a. Access Road Map has been modified. See amended attachment Item 5a.

VI. NatureWorksPark Project

- a. The site has a Restrictive Covenant in place. The removal vegetation shall be minimized and will be limited only to that essential to performing the streambank project.
- b. Brush material removed shall be taken off site for disposal. The Duncansville Research and Development Facility or other off-site disposals would be suitable locations for disposal.

**BIDDER MUST ACKNOWLEDGE THIS AMENDMENT BY SIGNING BELOW AND ATTACHING THE SIGNED AMENDMENT TO THE BID FORM:**

Company Name \_\_\_\_\_

Contact Person \_\_\_\_\_

Signature \_\_\_\_\_

Date \_\_\_\_\_

**Yohn Property Project Materials List**

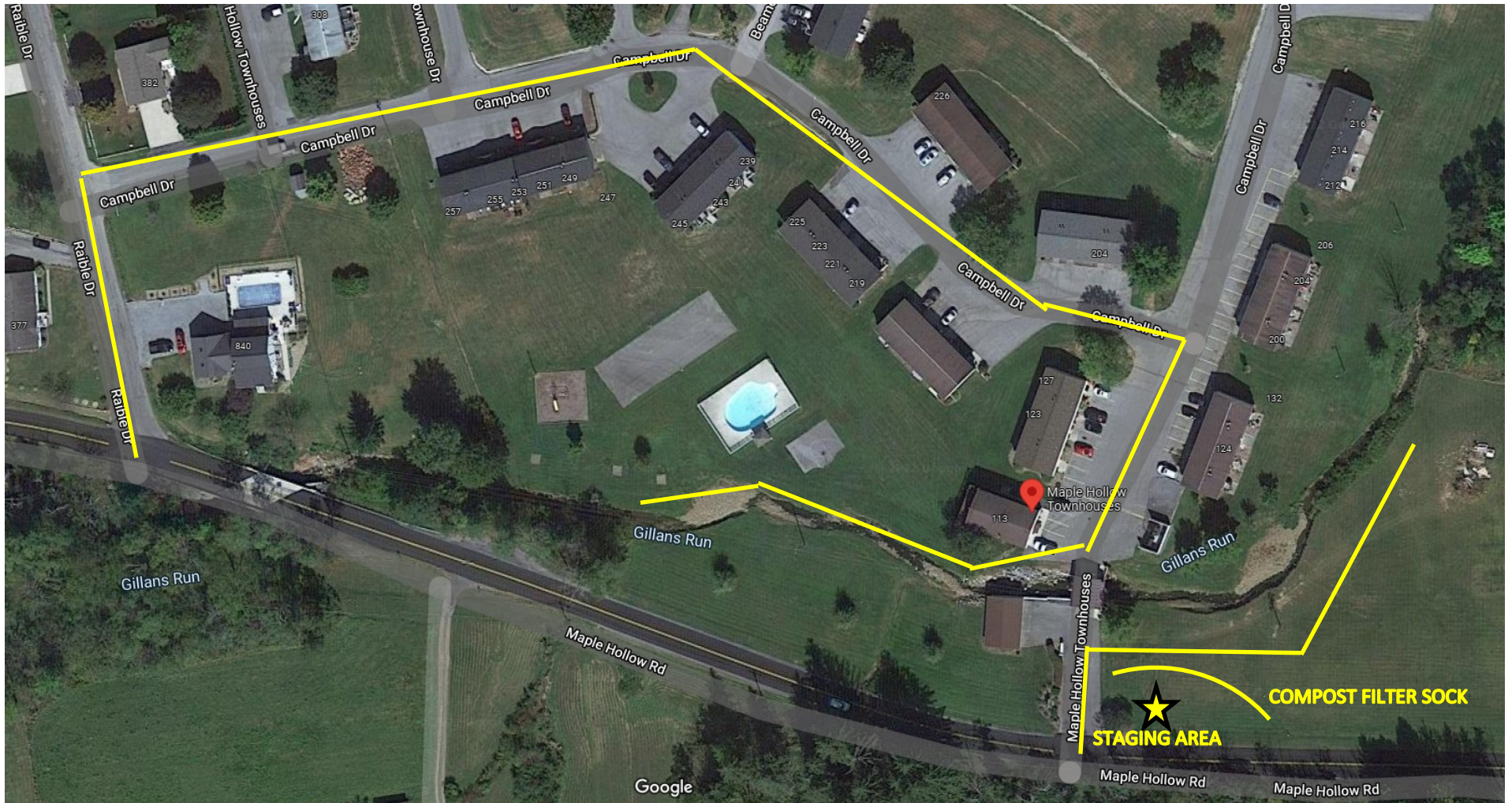
**UNT to Spencer, Blair County**

Device: 1 Section Modified Mud Sill				
Device#: 2, 3, 9				
Materials	Quantity Per Device		# of Devices	Total for all Devices
Sill Logs: 10'x 10-12" Dia.	2		3	6
Face Logs: 20'x 8-10" Dia.	3			9
Rebar Pins (5/8"): 2'	7			21
Rebar Pins (5/8"): 4'	4			12
Stone (12-18" Dia.) tons	5			15
Other: Seed & Mulch				
Device: 2 Section Modified Mud Sill				
Device#: 1				
Materials	Quantity Per Device		# of Devices	Total for all Devices
Sill Logs: 10'x 10-12" Dia.	4		1	4
Face Logs: 20'x 8-10" Dia.	6			6
Rebar Pins (5/8"): 2'	14			14
Rebar Pins (5/8"): 4'	8			8
Stone (12-18" Dia.) tons	10			10
Other: Seed & Mulch				
Device: Saw-Tooth Deflectors <span style="background-color: yellow;">(Amendment 01)</span>				
Device #: 6-8				
Materials	Quantity Per Device		# of Devices	Total for all Devices
Stone (12-18" Dia.) tons	5		1	5
Device: Log Framed Stone Deflector				
Device#: 11-14				
Materials	Quantity Per Device		# of Devices	Total for all Devices
Logs: 10'x 8-10" Dia.	1		2	2
Logs: 20'x 8-10" Dia.	1			2
Rebar Pins (5/8"): 2'	2			4
Rebar Pins (5/8"): 4'	6			12
Stone (12-18" Dia.) tons	5			10
Other: Seed & Mulch				

**Item 3a**

<b>Materials</b>	<b>Total Quantity for Entire Project</b>	
Logs: 10'x 8-10" Dia.		2
Logs: 10' x 10-12" Dia		10
Logs: 20'x 8-10" Dia.		17
Rebar Pins (5/8"): 2'		39
Rebar Pins (5/8"): 4'		24
Stone (12-18" Dia.) tons		<del>35</del> 40 ( <i>Amendment 01</i> )

**Item 4a**





Item 5a



 = STAGING AREA

 = COMPOST FILTER SOCK